



# 2022 ANNUAL REPORT

## ABOUT NAZARETH HOME

Nazareth Home was established in 1976 as a healthcare ministry founded by the Sisters of Charity of Nazareth. Today, Nazareth Home is an award-winning, 5-star rated long-term care and rehabilitation organization that provides person-centered health and wellness services for adults and families. With two campuses in Louisville, Ky., Nazareth Home enriches the lives of its patients through personal care, memory care, Recovery to Home, and long-term care programs. To learn more, visit [nazhome.org](http://nazhome.org).

## OUR MISSION

A compassionate and welcoming community providing health and wellness services for adults and families, with an intentional focus on hospitality and excellence.

## OUR VALUES



### SPIRITUALITY

Belief in God and the role of faith in healing.



### EXCELLENCE

Passion for superior performance and outcomes.



### RESPECT

Honoring the individual and reverence for life at all stages.



### COMPASSION

Motivated by care and concern for others.



### COOPERATION

Belief in partnership and working well with all others.



## MESSAGE FROM THE PRESIDENT

As the year ended, it was natural to think about what was experienced in 2022. We began that year with hopes that COVID concerns would move away from us and we could look forward to a new normal. COVID is still present, however. Maybe it's a bit different, and we feel more secure being vaccinated, but the precautions and requirements continue to be impactful.

Despite the burden of the COVID routines, we reflect on many successes! We love our ministries, the people who work in them, and the families and individuals who are here. The relationships and success stories turn our flywheel and make us stronger. Last year, we were very proud to enter two top workplace competitions, one sponsored by Louisville Business First and one by The Courier-Journal. In each, we were recognized locally among various quality organizations as a great place to work. Considering the challenges of our workplace and challenges for the workforce during the pandemic, these positive survey results were such welcome news to us and validated the attention we devote to our culture.

The pandemic has been a great reminder of the value of our environment and culture and the relationships that are fostered because of those strong values. We see clearly that our environment is how our ministry is evaluated by those who experience it. In December 2022, we were named by U.S. News & World Report as one of the top 10 percent of nursing homes in the nation. Their evaluation is made from performance metrics used to establish quality in long-term care centers, and we are beyond proud to be among this distinguished group.

As we plan for 2023, we start with gratitude for our history of service and for everyone who sustains this ministry in the many ways we are supported. We look forward to deepening our partnerships, finding useful and creative technologies, and engaging with purpose with our stakeholders in clear and meaningful ways for the community.

*Mary Haynes*

Mary Haynes, RN, MS, MSN, CNHA  
President/CEO | Nazareth Home



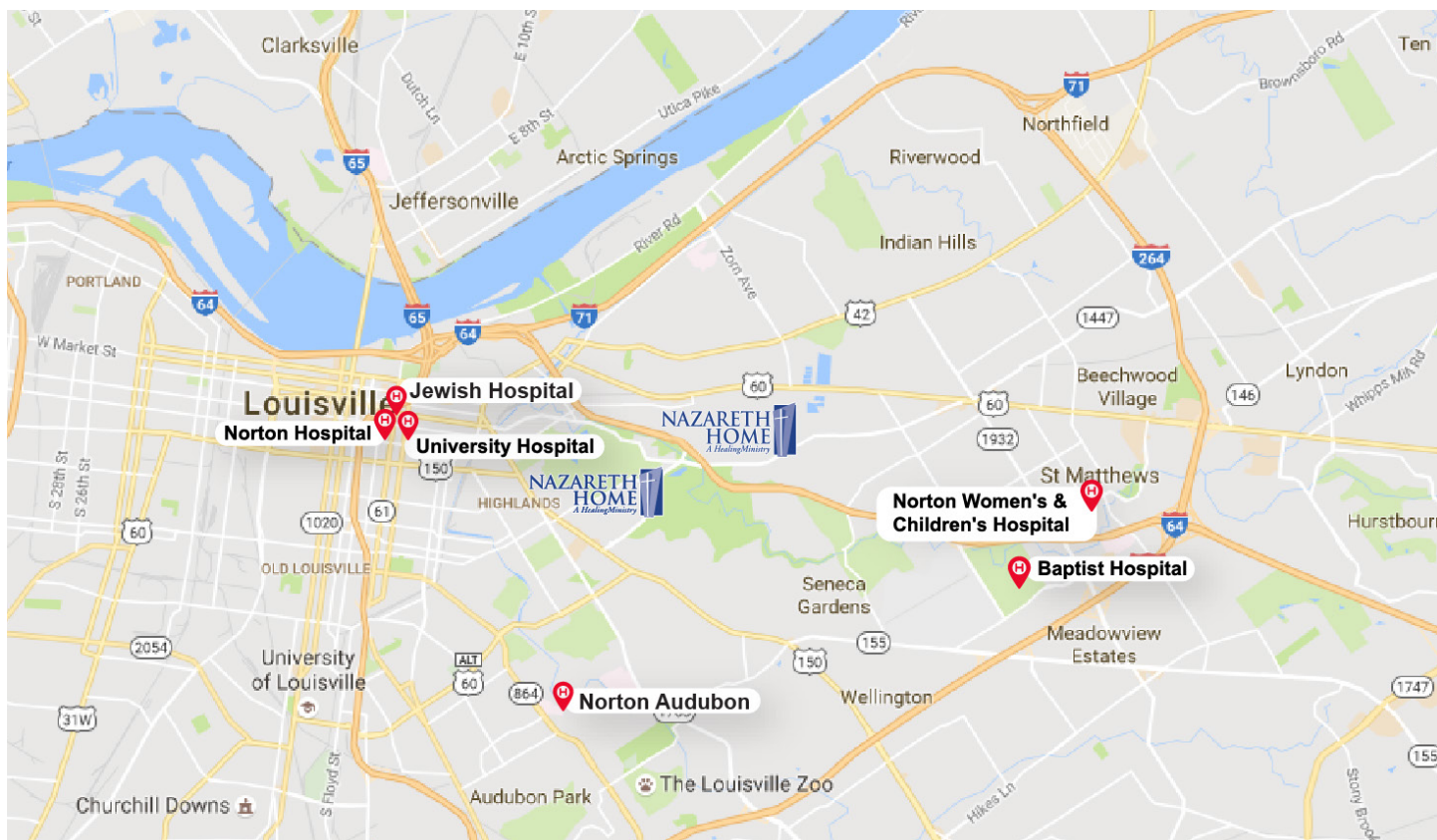


**HIGHLANDS CAMPUS**  
2000 Newburg Road, Louisville, KY 40205



**CLIFTON CAMPUS**  
2120 Payne Street, Louisville, KY 40206





## Our Services

LONG-TERM CARE • MEMORY CARE  
PERSONAL CARE • RECOVERY TO HOME



## BOARD OF DIRECTORS

Clara Passafiume  
CHAIR

Jason Smith  
VICE CHAIR

Mary Haynes  
PRESIDENT/CEO

Sister Rebecca Miles  
BOARD SECRETARY  
SISTERS OF CHARITY OF NAZARETH

Sister Rhoda Kay Glunk  
SISTERS OF CHARITY OF NAZARETH

Sister Carole Kaucic  
SISTERS OF CHARITY OF NAZARETH

Joseph A. "Tony" Brosky, Jr.

Gregg Cobb

Jennifer Thomas

Rev. William Hammer

# Ensuring EXCELLENCE

## NUMBER OF NEW ADMISSIONS



TOTAL FOR HIGHLANDS CAMPUS **526**



TOTAL FOR CLIFTON CAMPUS **478**

**TOTAL NEW ADMISSIONS  
TO NAZARETH HOME**

**1,004**

## TWO NEW ASSISTANT ADMINISTRATORS



**ASHLEY COCHRAN**  
ASSISTANT ADMINISTRATOR  
CLIFTON CAMPUS



**SHARON WEIKERT**  
ASSISTANT ADMINISTRATOR  
HIGHLANDS CAMPUS



Father Roy Stiles

## NEW INDEPENDENT LIVING PROGRAM

A renovated building on Nazareth Home's Clifton Campus now has 12 independent living suites designed especially for senior priests, thanks to a partnership with the Archdiocese of Louisville. Senior priests are those who have retired as parish pastors and administrators but are still ministering and serving where they're needed. Each suite has a small living area, a bedroom and a private bath. The building also has a kitchenette, laundry area and a parlor. The preparation of meals, laundry and housekeeping is included in their monthly rent.

## HOMECOMING EVENT FOR VOLUNTEERS

During our Volunteer Homecoming event in November 2022, we celebrated the many gifts and talents our volunteers bring to our ministry each day. They play a large part in our ability to offer high-level compassionate and loving care to our community. We were honored to welcome back so many of our beloved volunteers for an evening of celebration.



## MOBILE ORTHOPEDIC CARE

Nazareth Home began working with Louisville-based Live Well Orthopedic Care, a mobile orthopedic practice. Through the partnership, Live Well visits both Nazareth Home campuses regularly to treat elders with orthopedic needs such as arthritis management, joint injections, and non-operative fractures. If there is any indication a patient needs to be sent out for surgery, such as in the case of a fracture or a knee or hip replacement, Live Well maintains relationships with orthopedic surgeons locally and can easily make a referral. Live Well works closely with our medical director Dr. Bonnie Lazor, the nursing teams, therapy and family members to ensure patients are making progress in their recovery.





## HELD - HELPING EMBRACE LIFE DECISIONS

In early 2022, Nazareth Home began a partnership with Pallitus Health, a part of Hosparus Health, and implemented a new complex disease management program known as HELD. The program supports Nazareth Home residents who have extreme or complex medical situations that benefit from the attention and expertise of multiple health care providers. HELD brings together experts in the fields of geriatrics and complex disease management to develop an individualized plan that focuses on the unique healthcare needs of the resident. The program involves closely monitoring patients and addressing symptoms early on so patients can discuss their goals and treatment options with their healthcare team and create a healthcare plan that aims to improve their quality of life.

As of November 2022, 64 residents had been cared for through the program with fantastic feedback from families.

“

The HELD program helped us be able to figure out a timeline for both my mom and dad. Entering the program was very timely, working hand-in-hand with me, and we knew we had a short timeframe. They kept us informed constantly. The support we received from Nazareth Home really brought our family closer and helped us get through losing our parents so close together. This whole process has been an amazing journey.

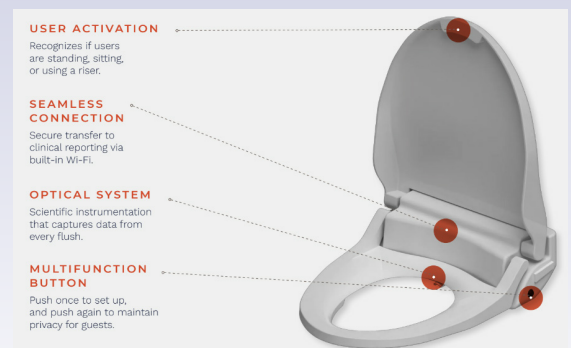
KATHY HARGIS



## TRUELOO SMART TOILET SEAT

In December 2022, Nazareth Home partnered with Toi Labs to begin a pilot of the TrueLoo Smart Toilet Seat in our Charity Court neighborhood. TrueLoo is a Wi-Fi-connected device that privately and securely gathers the toileting data of a resident for automated analysis. The device attaches to the existing toilet seat in the resident's bathroom, and it requires no change in behavior by the resident as they use it just as they would a normal toilet seat.

Ongoing monitoring of urination and bowel movements provides our nursing team with clues that can help them intervene early with treatment for certain conditions such as urinary tract infections. Early intervention is key to potentially avoiding hospitalization for the resident.







## FEEDBACK FROM FAMILIES

“

“They treat your family member with dignity and respect. The care was superb.”

ALICE FREHSE / DIANA LAWSON (DAUGHTER)

“I would tell others that it was a wonderful facility with a knowledgeable and caring staff.”

GERALD JOHNSON / ROBIN JOHNSON (DAUGHTER)

“I would tell someone who would ask me about Nazareth Home that it’s like a family atmosphere. The quality of the food and cleanliness is wonderful. There are plenty of opportunities for activities. There are multiple denominations that are practiced and welcomed.”

MAURICE DAVENPORT / SISTER MARGARET LILLIAN DAVENPORT (SISTER)

”



# A Great PLACE TO WORK

LOUISVILLE BUSINESS FIRST



2022 BEST PLACES TO WORK  
IN GREATER LOUISVILLE

Louisville Business First recognized Nazareth Home as one of the Best Places to Work in Greater Louisville for 2022. Employees were asked to complete a Quantum Workplace survey, which measures employee attitudes across different themes. In addition to providing person-centered health and wellness services for individuals and families, one of Nazareth Home's top priorities has always been to foster a positive work culture in which every employee has a voice and goes home feeling great about the work they're doing.



Nazareth Home was awarded a Top Workplaces 2022 honor by local news outlet The Courier-Journal. The annual list compiles the best workplaces in the Greater Louisville region based on employee feedback. For a company or organization to be considered for the Top Workplaces list, employees complete a survey that uniquely measures 15 culture drivers critical to an organization's success, such as alignment, execution, connection and more. Nazareth Home President/CEO, Mary Haynes, was also recognized as the recipient of the 2022 Leadership Award through the Top Workplaces program.

EMPLOYMENT  
AS OF 12/31/2022

247

HIGHLANDS CAMPUS

129

CLIFTON CAMPUS

“

I have never worked somewhere where the management team cares so much about me as a person.

ANONYMOUS, NAZARETH HOME EMPLOYEE

This organization is truly amazing! Every healthcare facility at this day and time has its stressful moments, but it is in those times over the past two years that I've seen the company as a whole come together and lift each other up.

ANONYMOUS, NAZARETH HOME EMPLOYEE

”





# THE NAZARETH HOMES FOUNDATION

*Ministry and Mission*



The Nazareth Homes Foundation raises funds to make a difference in the lives of elders by supporting the highest quality services, programs, equipment, and facilities in our organization. The foundation also supports Nazareth Home team members through a scholarship fund and other workforce development priorities, which further strengthens the excellent care they provide to our community.

## GIVE FOR GOOD LOUISVILLE

Through the generous gifts of many supporters, a total of \$16,490 was raised for the Nazareth Homes Foundation during Give for Good Louisville. The donations went toward our Sandra King Excellence and Education Fund, which helps Nazareth Home employees further their education in long-term care while alleviating some of the burdens of overwhelming tuition costs.

### 2022 GIVE FOR GOOD LOUISVILLE DONORS

#### Anonymous Donors

Sue K. Allen  
*In Memory of Patricia Anderson*

Theresa Arru, SCN  
*In Honor of Virginia Kern*

Sarah Askin

Melissa Bailey

Theresa Banic

Ceal Barry

Michael & Mary Bousamra  
*In Memory of Dr. Michael Bousamra*

Tony and Jean Brosky

Bridget Bunning

Al Burke  
*In Honor of Jennifer Smith*

Carrie Burns

Dr. Gregg T. Cobb

Meagan Compton

Timothy Copeland

Clinton and Amie Deckard

Rhoda Kay Glunk, SCN

Sharon Gray, SCN

Michelle Grgurich, SCN

Casslyn Harris

Mary Haynes  
*In Honor of Nazareth Home Staff*

Kelley Helgeson

Donna Herde

Ange Hernandez

Mary Angela Hicks, SCN

Kim Hobson

Cheryl and Larry Hughett

Betsy Johnson  
*In Memory of Polly Johnson*

Susan and Greg Johnson

Patrick Kane

Sandra L. King

Keith and Jane Knapp  
*In Honor of Mary Haynes*

The Knoop Family  
*In Memory of Frank Richard Knoop, Sr.*

Martha Lechleiter

Tom Logsdon

Mike and Diana Lush  
*In Memory of Dorothy Lush*

Mary Anne and Michael Lynch  
*In Memory of Mary Randol*

Erin Maguire-Osting

Joe Mashni

Mai Masri

Daugherty and Rick Murphy

Clara Passafiume and Ben Fultz  
*In Memory of Sebastian Paul Passafiume, Sr.*

Judith Petty

Bill and Darlene Pierce  
*In Memory of Celeste Dalton Gorman*

Angela Porter

Sarah Reed  
*In Honor of 500 Clifton Unit*

Jens Richters  
*In Honor of Josephine Holtkamp*

Helen B. Rothgerber  
*In Memory of Miriam Corcoran, SCN*

Kelley Runyon

Shannon Scroggins  
*In Memory of Edith Carolyn Dunnam*

Betty Shiels  
*In Honor of Jayne Miller*

Mable Sinclair  
*In Honor of Ann Sinclair*

Jason P. Smith

Jennifer Thomas

Mark W. Thomas

Lisa M. Timmering  
*In Honor of Jeanette Edna Franzman Timmering*

Jay Trumbo

Marie Underwood

Rose Andrew Waller, SCN

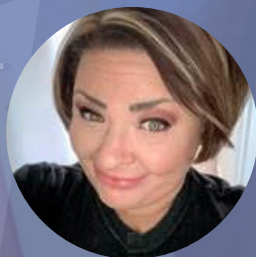
## SANDRA KING EXCELLENCE AND EDUCATION FUND SCHOLARSHIP

The Nazareth Homes Foundation awards the Sandra King Excellence and Education Fund Scholarship to deserving employees in the long-term care profession based on their academic achievements and commitment to quality care. The scholarship is offered to all Nazareth Home full-time and regular part-time employees attending an approved nursing or healthcare program. The scholarship is awarded yearly.

### 2022 RECIPIENTS



**PRECIOUS WILSON**  
CNA, CLIFTON CAMPUS



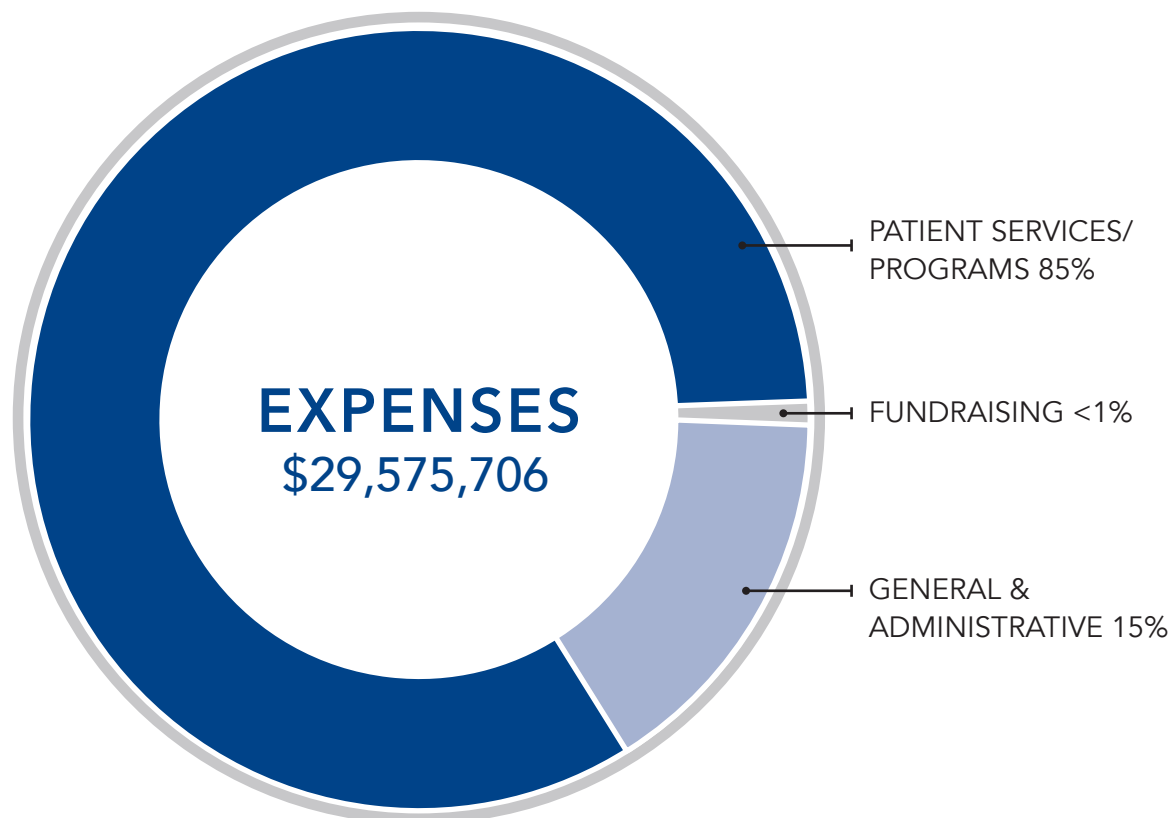
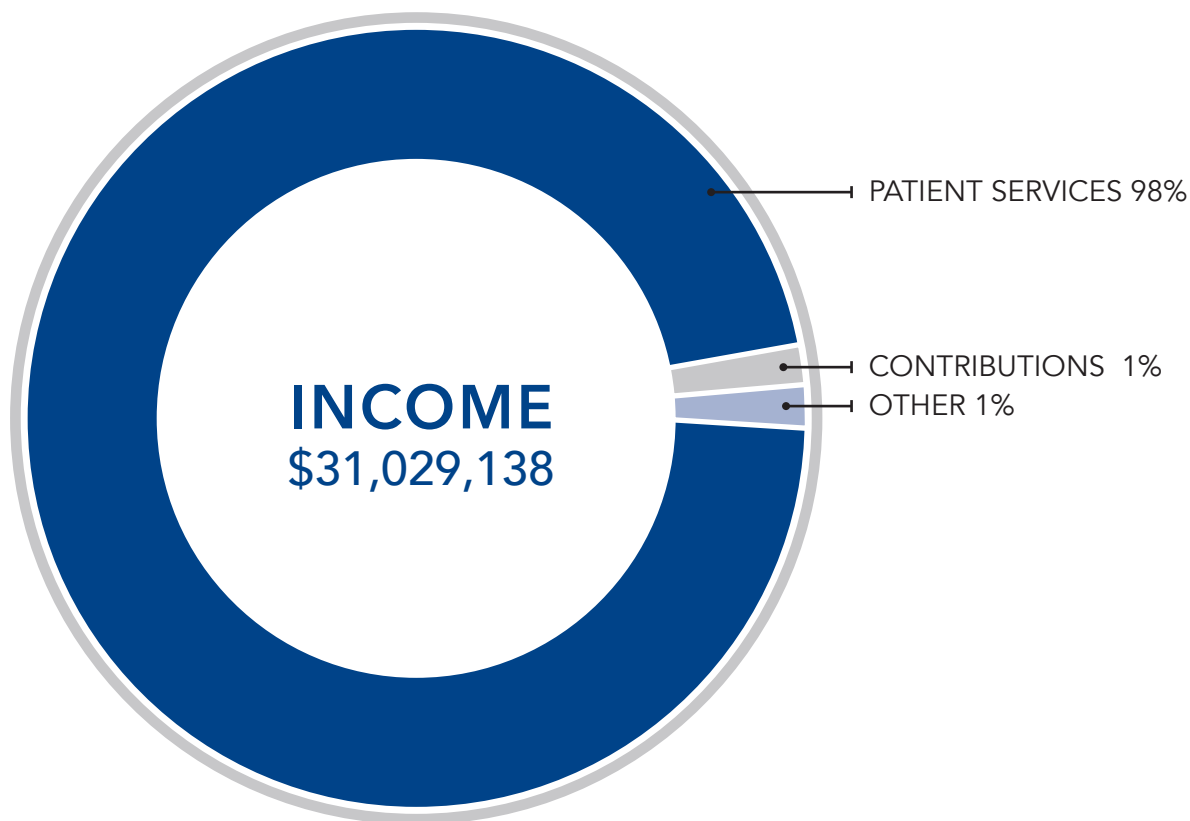
**MEAGAN COMPTON**  
LPN, ASSISTANT UNIT MANAGER,  
HIGHLANDS CAMPUS



**ASAHEL DAVIS**  
RN, HOUSE SUPERVISOR,  
HIGHLANDS CAMPUS



NAZARETH HOME, INC. AND NAZARETH HOMES FOUNDATION, INC.  
INCOME AND EXPENSES\*



\*Consolidated income and expenses for fiscal year ended August 31, 2022



#### HIGHLANDS CAMPUS

2000 Newburg Road  
Louisville, KY 40205  
(502) 459-9681

#### CLIFTON CAMPUS

2120 Payne Street  
Louisville, KY 40206  
(502) 895-9425

 @NAZARETHHOMES  @NAZHOMEINC  @NAZARETHHOMEINC  @NAZARETH-HOME-LOUISVILLE  @NAZARETH\_HOME\_LOUISVILLE

NAZHOME.ORG